

InteleViewer

Mac Installation Guide
4.2.1

COPYRIGHT

© 2010 Intelrad Medical Systems Incorporated. All Rights Reserved.

INTELERAD CONFIDENTIAL—NOT FOR DISTRIBUTION

No part of this publication may be reproduced or transmitted in any form or by any means, electronic or mechanical, including photocopying and recording, or by any information storage or retrieval system, without prior written consent from Intelrad Medical Systems Incorporated. If the receiving party of this publication is bound by a NDA, the contents of this publication should be considered "confidential" information.

Except as expressly provided otherwise in writing, the information provided in this document is provided AS IS, without any condition or warranty, whether written, oral, express, implied, legal, or statutory. No condition or warranty of merchantability or fitness for a particular purpose applies to anything provided by Intelrad except as expressly provided in writing within a Service or License Agreement. Without limiting the foregoing, except as specifically set forth in a Service or License Agreement, Intelrad nor any of its suppliers warrants this documentation is or will be accurate, error free or meets or will meet user requirements.

TRADEMARKS

Intelrad and the Intelrad logo, IntelePACS, IntelePACS Browser, InteleViewer, IntelePass, Reporting Worklist Module, Transcription Module, and Dictation Module are trademarks of Intelrad Medical Systems Incorporated.

THIRD-PARTY TRADEMARKS

Adobe, Acrobat, and Reader are either registered trademarks or trademarks of Adobe Systems Incorporated in the United States and/or other countries. Sun, Sun Microsystems, and Java are trademarks or registered trademarks of Sun Microsystems, Inc. in the United States and other countries. Intel, Pentium, Pentium II Xeon, and Pentium III Xeon are trademarks or registered trademarks of Intel Corporation or its subsidiaries in the United States and other countries. Microsoft and Windows are either registered trademarks or trademarks of Microsoft Corporation in the United States and/or other countries.

All other brand names, product names, or trademarks belong to their respective holders.

INDICATIONS FOR USE

IntelePACS is a device that receives digital images and data from various sources (such as, CT scanners, MR scanners, ultrasound systems, R/F units, computer and direct radiographic devices, secondary capture devices, scanners, imaging gateways, or other imaging sources). Images and data can be communicated, processed, manipulated, enhanced, stored, and displayed within the system and/or across computer networks at distributed locations. Post-processing of the images can be performed using Multi-Planar Reconstruction (MPR).

Lossy compressed mammographic images and digitized film screen images must not be reviewed for primary image interpretations. Mammographic images may only be interpreted using an FDA approved monitor that offers at least 5 Mpixel resolution and meets other technical specifications reviewed and accepted by FDA.

Typical users of this system are trained professionals, physicians, nurses, and technicians.

Caution: Federal law restricts this device to sale by or on the order of a physician.

Intelrad Medical Systems Incorporated
Central Station
895 de la Gauchetiere St W, Suite 400
Montreal, QC Canada H3B 4G1

DECLARATION OF CONFORMITY

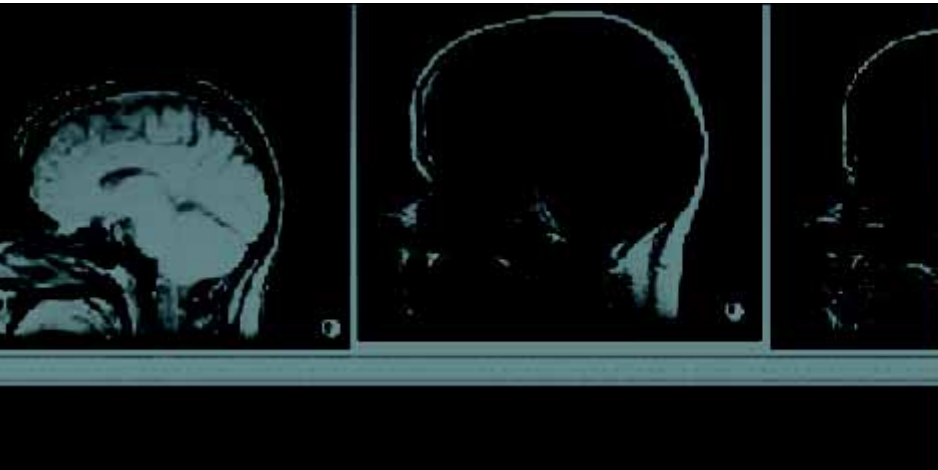
We hereby certify that the IntelePACS product, which includes InteleViewer, IntelePACS Browser, Reporting Worklist Module, and Transcription Module, is a Class IIa Medical Device and is in compliance with Council Directive 93/42/EEC and marked with



AUSTRALIAN SPONSOR

Emergo Asia Pacific
201 Sussex Street, Darling Park, Tower 2, Level 20
Sydney, NSW 2000, Australia
tel: +61.0.2.9006.1662

Title: InteleViewer Mac Installation Guide
Software version: 4.2.1
Date: May 7, 2010
Part number: IVEN421IG-O Issue 001



Installing IntelViewer on a Mac

This guide provides the information you need to install IntelViewer™ on an Apple® Mac OS X® operating system.

In this Chapter:

About Installing IntelViewer on a Mac	2
Installing IntelViewer on a Mac	2
Accessing Log Files	2
IntelViewer Feature Limitations on a Mac	3
Changes to IntelViewer Shortcut Keys	3



Intelera confidential—not for distribution

No part of this publication may be reproduced or transmitted in any form or by any means, electronic or mechanical, including photocopying and recording, or by any information storage or retrieval system, without prior written consent from Intelera Medical Systems Incorporated. If the receiving party of this publication is bound by a NDA, the contents of this publication should be considered "confidential" information.



About Installing IntelViewer on a Mac

You can run IntelViewer sessions on the Mac OS X operating system provided you have the necessary user privilege and system requirements.

User and Site Privileges

You must have the Mac Client user privilege enabled to open an IntelViewer session on a Mac.

The site you want to access must also be configured to allow users with the Mac Client user privilege to run IntelViewer sessions. Unless both conditions are met, you cannot log in to IntelViewer.

System Requirements

To run IntelViewer on a Mac, the following is required:

- Mac OS X 10.6 Snow Leopard®
- Java 1.6

Installing IntelViewer on a Mac

To install IntelViewer on your Mac, you need the disk image file which contains the application bundle.

To install IntelViewer:

1. Double-click *IntelViewer.dmg*.



This disk image contains IntelViewer and a license agreement.

2. Drag IntelViewer to the desired location on your Mac.
3. Double-click IntelViewer.
4. Make a shortcut link to IntelViewer.

Accessing Log Files

Log files are accessible from your Mac */temp* directory.

IntelViewer Feature Limitations on a Mac

When running IntelViewer on a Mac, the following features are disabled or unavailable:

- Exporting to DICOM by using IntelViewer
- Burning to CD
- Viewing images in 3D
- Integrations with third party applications running on Windows®
- Philips® SpeechMike™
- Launching IntelViewer from IntelBrowser
- To Sign tab
- Upgrading by using the IntelViewer Utilities menu
- Terminal services
- DICOM service (autorouting, retrieval, working offline, sending to PACS)
- *IntelViewer User's Guide* for Mac

Changes to IntelViewer Shortcut Keys

On a Mac keyboard, the shortcut keys for performing the actions below are different than those on a Windows PC keyboard:

- To access Help documentation, press **FN+F1**.
- To reset an image, press **CTRL+DELETE**.
- To delete a selected measurement, press **FN+DELETE**.