

# IntelePACS

Release Notes  
3.8.1

## COPYRIGHT

© 2004-2009 Intelrad Medical Systems Incorporated. All Rights Reserved.

No portion of the contents of this publication may be reproduced or transmitted in any form or by any means without the express written permission of Intelrad Medical Systems Incorporated.

Except as expressly provided otherwise in writing, the information provided in this document is provided AS IS, without any condition or warranty, whether written, oral, express, implied, legal, or statutory. No condition or warranty of merchantability or fitness for a particular purpose applies to anything provided by Intelrad except as expressly provided in writing within a Service or License Agreement. Without limiting the foregoing, except as specifically set forth in a Service or License Agreement, Intelrad nor any of its suppliers warrants this documentation is or will be accurate, error free or meets or will meet user requirements.

## TRADEMARKS

Intelrad and the Intelrad logo, IntelePACS, IntelePACS Browser, InteleViewer, IntelePass, Reporting Worklist Module, Transcription Module, and Dictation Module are trademarks of Intelrad Medical Systems Incorporated.

## THIRD-PARTY TRADEMARKS

Adobe, Acrobat, and Reader are either registered trademarks or trademarks of Adobe Systems Incorporated in the United States and/or other countries. Sun, Sun Microsystems, and Java are trademarks or registered trademarks of Sun Microsystems, Inc. in the United States and other countries. Intel, Pentium, Pentium II Xeon, and Pentium III Xeon are trademarks or registered trademarks of Intel Corporation or its subsidiaries in the United States and other countries. Microsoft and Windows are either registered trademarks or trademarks of Microsoft Corporation in the United States and/or other countries.

All other brand names, product names, or trademarks belong to their respective holders.

## INDICATIONS FOR USE

IntelePACS is a device that receives digital images and data from various sources (such as, CT scanners, MR scanners, ultrasound systems, R/F units, computer and direct radiographic devices, secondary capture devices, scanners, imaging gateways, or other imaging sources). Images and data can be communicated, processed, manipulated, enhanced, stored, and displayed within the system and/or across computer networks at distributed locations. Post-processing of the images can be performed using Multi-Planar Reconstruction (MPR).

Lossy compressed mammographic images and digitized film screen images must not be reviewed for primary image interpretations. Mammographic images may only be interpreted using an FDA approved monitor that offers at least 5 Mpixel resolution and meets other technical specifications reviewed and accepted by FDA.

Typical users of this system are trained professionals, physicians, nurses, and technicians.

Caution: Federal law restricts this device to sale by or on the order of a physician.

Intelrad Medical Systems Incorporated  
Central Station  
895 de la Gauchetiere St W, Suite 400  
Montreal, QC Canada H3B 4G1

## DECLARATION OF CONFORMITY

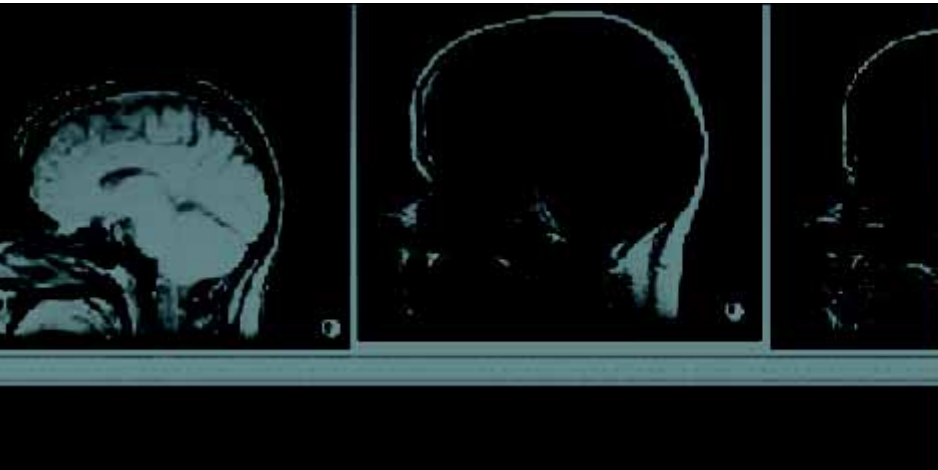
We hereby certify that the IntelePACS product, which includes InteleViewer, IntelePACS Browser, Reporting Worklist Module, and Transcription Module, is a Class IIa Medical Device and is in compliance with Council Directive 93/42/EEC and marked with



## AUSTRALIAN SPONSOR

Emergo Asia Pacific  
201 Sussex Street, Darling Park, Tower 2, Level 20  
Sydney, NSW 2000, Australia  
tel: +61.0.2.9006.1662

Title: IntelePACS Release Notes  
Software version: 3.8.1  
Date: October 29, 2009  
Part number: IPEN381RN-O Issue 004



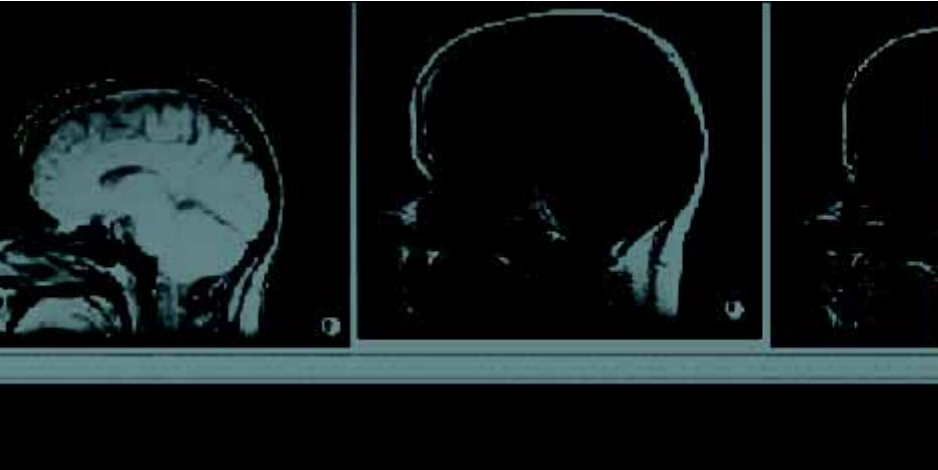
# Table of Contents

Contacting the Intelera <sup>d</sup> Support Center	2
<b>Resolved Issues</b>	<b>3</b>
Resolved Issues in Version 3.8.1 R7	3
Resolved Issues in Version 3.8.1 R6	4
Resolved Issues in Version 3.8.1 R5	5
Resolved Issues in Version 3.8.1 R4	7
Resolved Issues in Version 3.8.1 R3	9
Resolved Issues in Version 3.8.1 R2	13
<b>New Features in Version 3.8.1</b>	<b>16</b>
IntelePACS Browser	16
InteleViewer	18
Reporting Worklist	20
Transcription Module	20
IntelePACS	20
<b>New Features in Version 3.7.1</b>	<b>21</b>
IntelePACS Browser	21
InteleViewer	22
Reporting Worklist	23
Transcription Module	24
IntelePACS	24



---

<b>New Features in Version 3.6.1</b>	<b>25</b>
IntelViewer .....	26
Reporting Worklist .....	27
Transcription Module .....	27
IntelPACS .....	27
<b>Changes to Documentation</b>	<b>29</b>
New Features for IntelViewer .....	29
<b>Known Issues</b>	<b>30</b>
IntelPACS Browser .....	30
IntelViewer .....	30
Reporting Worklist .....	32



# 3.8.1

# IntelePACS Release Notes

*This document describes the new features available in each of the last three IntelePACS product releases. Each release encompasses the IntelePACS Browser, InteleViewer, Reporting Worklist module, and Transcription module applications, and the IntelePACS server software.*

## Contacting the Intelrad Support Center

Your IntelePACS administrator can assist you with any issues you may encounter. If you require additional assistance, you can contact the Intelrad Support Center, 24 hours a day, seven days a week. You can contact the Intelrad Support Center by phone, email, or via the Web.

<b>To contact us:</b>	<b>Use:</b>
On the Internet	<a href="https://support.intelerad.com">https://support.intelerad.com</a>
By phone	Toll-free North America: 1-866-951-6222. Toll-free Australia: 1-800-286-418. Toll-free New Zealand: 0800-969-123 Other: +1-514-931-7127 or +1-514-931-6222 ext. 2.
By email	<a href="mailto:support@intelerad.com">support@intelerad.com</a>

These coordinates and a wealth of other information are also available on the Intelrad Education & Support Center:

<https://support.intelerad.com>

You should regularly check this site to access the latest version of the documentation, as well as to access other product-specific resources such as knowledge bases, tutorials, downloadable files, and discussion forums.

When you contact the Intelrad Support Center to report a problem, please have at hand the following information, as applicable:

- Your Site ID (or Site Code) and location of your IntelePACS installation.
- The full error message and the steps required to reproduce the problem.
- The AE Titles of the affected devices.
- The operating systems of any affected machines.
- A description of the problem and when it first occurred.

If the problem affects a particular study, please also provide the following:

- Patient ID or patient number (M.R.N.).
- Accession Number/Requisition Number.
- The modality type and name.

---

## Resolved Issues

### Resolved Issues in Version 3.8.1 R7

The following issues were resolved since version 3.8.1 R7. For more information, please contact the Intelrad Support Center.

	<b>Slip Num.</b>	<b>Issue</b>
<b>IntelePACS</b>	25419	Add a selector that can match on any combination of field values.
	25671	Unintentional SPS status change to the order status.
	25716	Revert to bcp as the default backup mechanism.
<b>InteleViewer</b>	23369	Does not launch PowerScribe <sup>®</sup> because password is not sent correctly.
	24140	Add support for launching the COMRAD dictation system.
	25497	Entering Organization and Site column filters do not provide “contains any” filtering on strings.
	25576	Organization filter is too large.
	25605	Extra logging to debug the worklist service.
	25722	Implement a workaround to a memory leak caused by the integration with RadWhere <sup>™</sup> .
	25730	Add a way to use the command launcher without closing the process output stream.
	25746	PET/CT Fusion module, version 1-1-25-P2.
<b>Reporting Worklist</b>	25712	Error when querying for image counts.
<b>Transcription Module</b>	25545	Does not show addenda when organization restrictions are enabled.

## Resolved Issues in Version 3.8.1 R6

The following issues were resolved since version 3.8.1 R5. For more information, please contact the Intelrad Support Center.

	<b>Slip Num.</b>	<b>Issue</b>
<b>IntelePACS</b>	20642	Very slow while deleting HL7 files.
	22634	Core dumps when receiving an image with a length of 10 for the Series Date field.
	23598	HL7 File Sender prints ACK in the log when sending HL7 messages.
	24084	Support outgoing reports formatted in RTF.
	24717	Does direct HL7 Segments database connections.
	24947	Add index hinting where it is absent to prevent table scans.
	25223	DICOM Modality Worklist is paging due to Eclipsys <sup>®</sup> answering with AR when no orders are available.
	25229	Wipes out DICOM header file when the disk is out of space.
	25283	Frozen for 2 hours with no activity because the DICOM Modality Worklist is down.
	25317	New DICOM attributes required for ultrasound (US) regions support.
	25361	Inserting incorrectly formatted Service Object Pair unique IDs into the Image Event Queue.
	25528	Make itext2.0-intelerad-2.0.7-ims01 a runtime RPM instead of just a build-time RPM.
	25555	Uploaded log files are truncated to 2MB.
<b>IntelePACS Browser</b>	22442	Default font-size in the editor is too small (needs to be configurable).
	25402	When multiple reports are received for one accession number, only one is displayed in the Signing Worklist and Manage Reports.
	25564	Order Entry Tool does not apply postfix codes to autogenerated accession numbers.

	<b>Slip Num.</b>	<b>Issue</b>
<b>InteleViewer</b>	23110	The To Sign tab does not match the current color theme.
	24690	Can record/save audio with no order information.
	25409	Worklist allows a radiologist to dictate without holding a lock.
	25444	A 3.8.1 viewer cannot be installed on a 3.7.1 IntelePACS.
	25553	Prints misleading exception when querying for image counts and the reporting worklist is empty.
	25569	Should not query for image counts if the worklist is empty.

### **Resolved Issues in Version 3.8.1 R5**

The following issues were resolved since version 3.8.1 R4. For more information, please contact the Intelrad Support Center.

	<b>Slip Num.</b>	<b>Issue</b>
<b>IntelePACS</b>	22207	Add the number of minutes transcribed to the SRS statistics report.
	22208	Add a new SRS-based report.
	25088	Environment modifications and various improvements.
	25181	Cannot open a study because a series cannot be retrieved.
	25190	Add an END_TRANSCRIPTION audit event when the transcription is done.
	25211	Update the Audio Duration In Seconds column when receiving MP3 files.
	25261	Images with matching HL7 order information fail automated validation.
	25266	Add support for a new Close Transcription audit event.
	25293	Need new build of library (updated dicom.dic).
	25314	New reusable inbound transformer to preserve OBR-15.4 sent in from RIS.
	25319	Need a new validation algorithm for data migration.
	25366	Inbound transformer to remove time zone offset.
	<b>IntelePACS Browser</b>	24816
25257		Need new query for IHE Auditing database.
25258		Some database tests are broken.



	<b>Slip Num.</b>	<b>Issue</b>
<b>IntelViewer</b>	17718	Unable to read Clinical History and Notes in the Teaching Case tab because fields are too small.
	24355	Search tab is visible despite being disabled.
	24357	File   Export Report to PDF opens the report viewer even when the patient record tab is enabled.
	24998	User is unable to mark study dictated when parking studies if RIS ID is not set.
	25135	Large value for PATIENT_SEARCH:periodicSearchInterval has opposite of intended effect.
	25238	Teaching Cases - Clinical History/Findings fields hide text (dark theme).
	25303	The button to open the color series in the satellite window always opens the old series when the worklist is disabled.
	25311	Need a way to know where logs are going.
<b>Transcription Module</b>	25348	Superfluous OPEN_TRANSCRIPTION event.

## Resolved Issues in Version 3.8.1 R4

The following issues were resolved since version 3.8.1 R3. For more information, please contact the Intelrad Support Center.

	<b>Slip Num.</b>	<b>Issue</b>
<b>IntelePACS</b>	16886	Add robots.txt to web servers to avoid Google listing of login pages for client sites.
	17111	Use ZDS segment.
	22051	IPmon event processing dies with SIGTERM when the processing of events is slow.
	24999	Need to burn procedure Scheduled Step ID (OBR-20) into MP3 files.
	25087	Air gap in mammography key images is not respected.
	25119	JPEG server unable to process requests.
	25128	Need a transformer to convert   tag to  .
	25143	Add new DICOM attributes for VOI LUT Function support.
	25218	Cannot load studies containing ICAD RTSTRUCT series.
	25219	Empty sending facility causes NPE.
	25226	Unable to perform query when URL contains a special character.
	25259	Add robots.txt to the static content of the web proxy controller configuration file.
<b>IntelePACS Browser</b>	20398	Received "Error: Sorry, you must further constrain your query." during Advanced Search, but the search is still being done.
	23892	Editing a report sent via HL7 with a missing date does not work.
	25194	Loading the IntelePACS Monitor page generates multiple requests for the same image bundle.
	25206	DICOM Modality Worklist page shows error when attempting to display help link.
	25222	Requests for Google Web Toolkit resources should not be authenticated.
	25256	The user log is not closed after Google Web Toolkit requests.



	<b>Slip Num.</b>	<b>Issue</b>
<b>InteleViewer</b>	20700	Cannot copy Measurement Overlay tool result positions.
	25038	NM series exported for MedImage MedView™ are missing DICOM header fields.
	25080	View Code sequence is not properly added to the series header.
	25169	Need to burn procedure Scheduled Step ID (OBR-20) into MP3 files.
<b>Reporting Worklist</b>	24556	Priority change requests to a lower priority result in incomplete HL7 messages with error messages on screen about a missing PID segment.
	25183	Need to burn procedure Scheduled Step ID (OBR-20) into MP3 files.

---

## Resolved Issues in Version 3.8.1 R3

The following issues were resolved since version 3.8.1 R2. For more information, please contact the Intelrad Support Center.

	<b>Slip Num.</b>	<b>Issue</b>
<b>IntelePACS</b>	22641	Error loading some series labelled as MG.
	23804	Times out with large User Study Level Access table.
	23820	Does not always put UNASSIGNED in OBR-32 when it should.
	23851	PACS script to change the organization in HI7SegmentsIhe.
	23862	Error messages when receiving an HL7 message and the message rejector transformation is used.
	24429	Frequent restarting needlessly fills the /var directory.
	24442	Unable to generate reports from IntelViewer when the requested procedure ID contains a dash.
	24489	Web Server Proxy project.
	24544	Email messages for autoroute problems are difficult to understand.
	24552	Need an upgrade script for adding new instances of the database.
	24595	Data Migration Module may cause RIG desynchronization or loss of data.
	24608	Wrong encoding of OBR-32 stalls integration efforts.
	24682	Optionally disable cache of "To Read" cases and SRS fillers for no-worklist sites.
	24700	Invalid control file allowed to be compiled (duplicate keys in same section).
24715	Cancelled procedure is promoted to transcribed in RIS by SRS Guardian.	
24842	Cannot download MP3 files from IntelePACS Browser with URL-encoded file names for MRNs that contain a slash.	



	<b>Slip Num.</b>	<b>Issue</b>
<b>IntelePACS</b>	24848	Last Modification Time for reports inserted by Results Reporting channel does not match the date/time when the message arrived.
	25021	Some default rewrite rules break the web proxy configuration.
	25022	Erroneous notifications about the CREATE_ORC_FOR_ORU_MESSAGES feature.
	25034	Signing Worklist is broken. Needs proxy rule for TinyMCE scripts.
	25050	Different generated OBSERVATION_END_DATE_TIME values on synchronization.
	25079	Verification fails on patients with no model history and differences only in OBR::OBSERVATION_END_DATE_TIME.
	25093	Peer reviews cannot be saved on new installs. At database creation time, the initialization script is not executed.
	25101	Schema change to master statistics needed in the Image Location Monitor project.
	25103	Loadable classes fail to load on application startup.
25107	Threading race condition.	

	<b>Slip Num.</b>	<b>Issue</b>
<b>IntelePACS Browser</b>	22546	There is no French version of the Online Help.
	23061	We need a public URL that can be used to launch InteleViewer.
	23847	Include Olympus® Microphone drivers for download.
	24120	Improvements needed to access help.
	24200	Need to load a default set of keywords into the Study Classifier database.
	24202	Need to add online help for the new Study Classifier pages.
	24371	Need traceability in the rule engine.
	24374	Report viewer not showing correct age for patients less than one year old.
	24402	User is told order completion list is not current when a Tomcat session has expired.
	24410	The filenames for the CSV files are not consistent.
	24671	Chooses a non-optimal join order when user access restrictions are used.
	24683	Uploading a CSV file encoded in UTF-8 prevents matching mappings with accented characters.
	24828	Include Philips® Speechmike drivers for download.
	24829	Back slashes entered in ATC cause orders displayed in the Order Entry Tool to be blank.
	24933	Error in Signing Worklist when a transcribed report is cancelled.
	24955	Spelling mistake in error message.
	24958	IPmon uses wrong operator for x failures in y minutes.
24962	IPmon uses wrong rule description in the rule panel.	
25047	Broken links to installers in the Help page.	
25092	Broken image links in Edit Series page.	
25111	Signing Worklist Status crashes because of null visit object.	



	<b>Slip Num.</b>	<b>Issue</b>
<b>IntelViewer</b>	23567	Retried proxy invocations fail because of severed “keep-alive” connections.
	24405	Patient tab displays “...” for patient name and DOB for studies with no orders and no priors.
	24481	Unable to send edited teaching cases back to the PACS.
	24599	Annotations in key images are not saved if key images are not viewed in the Key Image Composer first.
	24633	Report viewer and patient record tab not showing correct age for patients less than one year old.
	24702	No logging when launching external URL via IntelViewer RIS Web Launcher.
	24800	Should not allow the user to add an addendum to an order that has not been dictated (causing RR channel to freeze).
	24944	Organization filter does not provide exact match filtering on strings.
	25001	When using IntelViewer RIS Web Launcher feature we should also send the username and full user name in the URL.
	25037	Calgary Scientific ResolutionMD™ integration: URL launched has incorrect path and missing application parameter.

---

## Resolved Issues in Version 3.8.1 R2

The following issues were resolved since version 3.8.1 R1. For more information, please contact the Intelrad Support Center.

	<b>Slip Num.</b>	<b>Issue</b>
<b>IntelePACS</b>	13772	Monthly/daily report desired showing number of minutes transcribed by each typist.
	18223	Add support for YBR_FULL.
	24131	Complete the database API.
	24132	Implement an intermediary for the PACS Globals database.
	24561	Allow for PostgreSQL configuration changes.
	24581	Fields with trailing whitespaces are stored differently in Sybase® and PostgreSQL.
	24595	Data Migration Module: May cause RIG desynchronization or loss of data if the RIGs have non-synced events.
	24608	Wrong encoding of OBR-32 stalls integration effort.
	24629	Searches for User Study Level Access are too slow when the table is large.
	24631	Must use User Study Level Access as the driving table when there is an index on Username.
	24645	Typo in the timer name OMT_COMPUTE_TIMER should be ZMT_COMPUTE_TIMER.
	24679	Migration logs too much.
	24691	Print file name in the notifier when unable to deliver an HL7 message.
	24722	The application does not start when configured in bidirectional mode.
	24760	Post Msg contains the order status and not the procedure status.
24773	DICOM Prefetch timestamp expires, restarts repeatedly.	
24788	Stops processing queue if there is an image to be transferred that is blocked by a blackout period.	
24832	Upgrade to etckeeper 0.40.	



	<b>Slip Num.</b>	<b>Issue</b>
<b>IntelePACS</b>	24855	Ensure that Microsoft® Windows® driver symlink exists at install time.
	24856	Package RPMs for Windows® Microphone drivers.
	24860	Schema change needed in the Image Storage project.
	24861	Local Drop needs to be able to dump tables other than PACS statistics.
	24871	Add new third-party RPM.
	24886	Deployment of Upgrade Manager RPMs is broken.
	24912	AtrReceiver.cfg contains duplicate keys.
	24921	No corrections are issued when an ADT^A45 message is used to merge two patients' visits.
	24970	Patient Model query does not return the proper OBR quantity timing when running the Sybase® backend.
<b>IntelePACS Browser</b>	23854	Provide a migration strategy to migrate the patient ID and accession number counters.
	23933	Peer Review Administration page only displays up to ten items per list.
	24283	Restore functionality to automatically generate accession numbers and patient IDs.
	24583	Upgrade to version 1.7 of Google Web Toolkit.
	24587	Cosmetic changes to the user interface.
	24805	One problematic report blocks the signing worklist.
	24820	In IP Monitor, the RPC call for fetching the events data is done twice.
	24823	Adding a new e-mail address edits an old entry.
	24826	Cannot mark rules as inactive.
	24846	In IP Monitor, an active checkbox in the rule dialog box is always set.
	24857	IP Monitor prevents the user from making too many asynchronous calls.
24892	IP Monitor gives the wrong error messages.	

	Slip Num.	Issue
<b>InteleViewer</b>	18888	Problems detecting greater than 4GB memory.
	24382	Owner field remains empty when an order is opened.
	24407	When using the IDS® dictation system, users see a warning every time they change a preference.
	24450	Fix configuration to point to its own section.
	24505	Priority field is unreadable in the patient tab.
	24542	Null pointer exception in Cursor3DMoveListener causes build failures.
	24579	Remove Create Account from login pages and change text to “Apply for Account.”
	24670	MP3 files tagged with wrong last, first patient name, corrupting Hl7SegmentsIhe.
	24707	Cannot send error messages from DICOM SCP when required fields are missing.
	24749	The patient search ignores the configuration key for the periodic search interval.
	24751	Unable to save a peer review when no opinion is selected.
	24756	Allows for multiple dictations in a third-party dictation system.
	24778	Configuration file has a line that should be a comment.
	24787	PET/CT Fusion Version 1-1-21-P1 (reverted fix).
<b>Reporting Worklist</b>	24511	Unable to connect to a server when the master host name is configured with an extra slash.
	24727	Unable to connect to a server error when the master host name is configured with an extra slash.
	24750	Prior orders showing up in the Reporting Worklist (CM status promotion sent for priors).





## New Features in Version 3.8.1

This section describes features and improvements added since the release of version 3.7.1 of IntelPACS Browser, IntelViewer, Reporting Worklist, Transcription module and IntelPACS.

### IntelPACS Browser

#### Critical Results Management

In IntelPACS Browser, an assistant can complete or add a follow-up note to a radiologist's request to communicate a critical result to a referring physician. An administrator can also view the history of completed critical result communications.

**Note:** This is an optional feature which may not be available on your IntelPACS system. Your user account must be configured to access this feature. For more information, contact your IntelPACS administrator.

#### Image Quality Review

In IntelPACS Browser, you can customize the Image Quality Review template to display information that is relevant to your organization. For example, you can add a new issue such as "Poor coverage" to the Image Quality Review form that appears in IntelViewer.

**Note:** This is an optional feature which may not be available on your IntelPACS system. Your user account must be configured to access this feature. For more information, contact your IntelPACS administrator.

#### Peer Review

In IntelPACS Browser, you can customize the Peer Review template to display information that is relevant to your organization. For example, you can add a new opinion such as "Difficult diagnosis" to the Peer Review form that appears in IntelViewer.

**Note:** This is an optional feature which may not be available on your IntelPACS system. Your user account must be configured to access this feature. For more information, contact your IntelPACS administrator.

#### Study Classifier

After you configure the Study Classifier feature in IntelPACS Browser, IntelPACS can automatically put a study into the correct reading group and assign the correct Due-In time for preliminary reporting. For each study, radiologists can see the reading group and time remaining before report deadline in the To Read panel of IntelViewer.

#### Monitoring the Status of Servers

The IntelPACS Monitor now allows you to proactively monitor the availability of any server on the IntelPACS network. You can use the IntelPACS Monitor to:

- Monitor the disk usage.

- 
- Monitor the status of the AutoRoute queue.
  - Ensure that the image\_server and WaveletPing processes are running on a server.
  - Test whether a server is reachable by performing a DICOM Ping.

You set up rules in the IntelPACS Monitor configuration page. When a server is unavailable, IntelPACS follows its active rule to determine which user will receive an email notification of such an occurrence so that the user can quickly resolve the problem.

### **Order Completion Tool (OCT) Change**

The Order Completion Tool (OCT) has been removed from the Order Entry page and merged with the Acquisition Traffic Controller (ATC) feature.

### **Report Privilege Changes**

- The Create Order privilege is renamed to Create and Modify Order and does not need to be enabled to allow users to complete orders.
- The new Complete and Assign Order privilege must be enabled to allow users to complete and assign orders to a radiology, reading group, or both.
- The Modify Order Status privilege is renamed to Advanced Order Management and must be enabled to allow users to modify the entering organization with the Order Entry Tool (OET).

### **Completing and Assigning Orders**

The new Acquisition Traffic Controller (ATC) feature provides you with two pages for managing orders. You use the Order Entry page to create an order, and then use the same page or the new Order Completion and Assignment page to view and verify the order information. Additionally, you can use the Order Completion and Assignment page to complete and assign the order to a specific reading group, radiologist, or both.

**Note:** This is an optional feature which may not be available on your IntelPACS system. Your user account must be configured to access this feature. For more information, contact your IntelPACS administrator.

### **IntelPACS Help**

The IntelPACS Browser Help is renamed IntelPACS Help. The online help now includes information for both IntelPACS Browser users and IntelPACS administrators.



## **IntelViewer**

### **Critical Results Management**

As a radiologist, you can use Critical Results Management to track the communication of critical results to referring physicians.

**Note:** This is an optional feature which may not be available on your IntelPACS system. Your user account must be configured to access this feature. For more information, contact your IntelPACS administrator.

### **Color Image Support**

You can view color images in a separate viewing frame that you can drag to your color monitor.

### **Support for Olympus Voice Recorder**

You can use the Olympus® DR- 2000 digital voice recorder to dictate your reports.

### **Air Gap Suppression**

Air gap suppression is applied to inverted images to indicate the parts of the digital detector that are not covered by breast tissue. When you invert the image, the air gap area remains black.

### **Reporting Worklist Improvements**

IntelViewer includes changes to the Reporting Worklist column. You can now sort the worklist based on:

- The reading groups to which you belong.
- The site (physical location).
- The owner (the person who reserved or who is currently viewing an order).
- The due-in time (the time remaining for reading the order).

### **Reverse Sorting**

You can choose to display sorted images in reverse order.

### **Simpler Network Requirements**

IntelViewer can receive image data from the IntelPACS using port 443 as well as port 5022. IntelViewer users can retrieve images from an IntelPACS with less risk of interference from network security systems. This new capability reduces the need for network administrators to reconfigure firewalls.

---

## Communications Module

To facilitate communication between radiologists, the instant messaging feature is now available in IntelViewer. You can use it to communicate instantly with other online radiologists and send them links to orders.

**Note:** This is an optional feature which may not be available on your IntelPACS system. Your user account must be configured to access this feature. For more information, contact your IntelPACS administrator.

## Image Quality Review

As a radiologist, you can use the new Image Quality Review feature to review and evaluate images taken by radiology technologists. The order that contains the images must have the CM-completed status in order to be eligible for review.

**Note:** This is an optional feature which may not be available on your IntelPACS system. Your user account must be configured to access this feature. For more information, contact your IntelPACS administrator.

## Peer Review

You can use the new Peer Review module to review and evaluate current report work performed by your peers. The order must have the ZZ- Report Available status to be eligible for review.

**Note:** This is an optional feature which may not be available on your IntelPACS system. Your user account must be configured to access this feature. For more information, contact your IntelPACS administrator.

## Integrated Document Solutions (IDS)

IntelViewer now supports Integrated Document Solutions® (IDS). You can use IDS Voice2Dox to dictate your reports. You can configure the IDS integration in the User Preferences.

## Log Files

In the event of a technical issue, you can transmit recent activity to the PACS server. The information you send is contained in a log file and can be composed of user actions, errors, exceptions, and warnings.

**Note:** After sending the log file to the PACS server, you must contact the Intelrad Support Center. Sending the log file alone does not trigger action from the Support Center.

## Patient Record Tab Changes

IntelViewer includes the following changes to the Patient Record tab:

- The Patient History tab has been renamed. It is now called the Studies tab.
- When you click a study in the Studies tab, the study no longer expands to display the related information. Instead, it appears in the right window panel.
- Order information and patient demographic information now appear in separate areas at the top of the patient order.



- The dictation controls now appear at the top of an order.
- The Send to Transcriptionist button has been renamed. Depending on whether you are creating a dictation or creating an addendum, the button is either Send Dictation or New Addendum.

## Reporting Worklist

### Support for Soft Informatique

Reporting Worklist now supports the Radiology Information System (RIS) from Soft Informatique.

## Transcription Module

### Site Restrictions

The dictations and addenda that a transcriptionist may search for and listen to are limited to the organizations that are specified in the Patient Search Restrictions section of the transcriptionist's user account.

## IntelePACS

### Image Based Reception Completion

Improvements have been made to the IntelePACS infrastructure to more efficiently handle the automatic completion of orders based on images acquired by the IntelePACS. With IntelePACS version 3.6.1 and earlier, you could setup the IntelePACS to automatically complete an order when receiving the first image of a study. In this case, the order appeared in the radiology worklist with incomplete image data.

With IntelePACS version 3.7.1 and later, additional parameters are considered during image acquisition, such as the amount of time that has elapsed since the last image received for a study or if a DICOM Modality Performed Procedure Step (MPPS) message is received (whichever occurs first). In this case, the order appears in the radiology worklist when IntelePACS has acquired all the image data.

### Organization Restrictions

IntelePACS can extend the access restrictions that are specified in the Patient Search Restrictions of a user's account. As well as searching, a user can perform tasks such as patient correction, manual validation, and transcription only for patient data that comes from organizations for which a user has permission to access.

**Note:** This is a configurable option. Please contact the Intelera Support Center for more information.

---

## **New Features in Version 3.7.1**

This section describes features and improvements added since the release of version 3.6.1 of IntelPACS Browser, IntelViewer, Reporting Worklist, Transcription module and IntelPACS.

### **IntelPACS Browser**

#### **Viewing Key Images Using In-Line JPEGs**

You can now use in-line JPEGs to view a study with key images.

#### **Report Distribution Enhancements**

The My Profile page includes preferences that allow you to specify your preferred delivery mode (by fax or email) and template for receiving reports by report distribution.

You can now insert key images into reports for distribution.

The Report Distribution module is no longer located under the Reporting module in the main menu.

#### **Manage Reports and Transcribe Reports Changes**

The search results appearing in the Manage Reports: Find Report page now includes a Radiologist column that displays the name of the radiologist that dictated the report.

The Patient ID and Accession Number fields on the Manage Reports and Transcribe Reports pages can no longer include partial information for your search criteria.

#### **Automatic Order Generation and Order Entry Tool Usability Improvements**

The Automatic Order Generation and the Order Entry options are no longer shown in IntelPACS Browser if your site is not configured to support these options. If the Automatic Order Generation option is configured, then the Automatic Order Generation option under RIS Order Integration Modes and the Prior Handling option appear on the DICOM Entities page. If the Order Entry option is configured, then the Order Entry tool appears in the main menu and the Create Order and Modify Order Status privileges are available on the Create User page.

#### **Audit Statistics Enhancements**

The Audit Statistics page includes a new Complete Dictation column that displays the number of dictations completed by each role specific to your site.

The Audit Details page includes a new Complete Dictation checkbox that allows you to view the audit activities of users completing dictations.



### **User Management Search Enhancements**

The Search tool in the Manage Users page now includes the Filter by User Keyword field that allows you to search for specific pending, expired, locked, and deleted user accounts and active sessions.

### **Order Generation Improvements**

You can now modify existing erroneous patient demographic information by using the Manual Order Generation page.

### **Autorouting Studies Based on Relative Age**

You can create autoroute rules to select a study based on its age, in days. You can use this rule to autoroute prior studies.

## **InteleViewer**

### **Reporting Worklist Module**

The new Reporting Worklist Module in InteleViewer is a fully-integrated radiological worklist, designed to enhance reading workflow and maximize productivity. The redesigned user interface provides streamlined interaction with all information relevant to the case at hand. You can open multiple orders simultaneously and the image display stays in sync, preventing potential dictation errors. You can also control the information that appears in the worklist by saving and applying, or even combining, custom filters.

**Note:** This is an optional feature which may not be available on your system. For information, contact your IntelePACS administrator.

**Note:** The redesigned InteleViewer user interface is only available for users of the new worklist module.

### **Session Locking**

To help ensure patient confidentiality, InteleViewer automatically locks your session if it has been idle for a fixed period of time. The idle period is configured by the IntelePACS administrator for each user account.

You can also lock your session manually if, for example, you plan to leave your workstation for some time.

Once the session is locked, you can unlock it by entering your password. You can also switch users or close the session, however, these options will close the existing session and delete all unsaved data.

**Note:** If you are using InteleViewer Workstation or are connected to another DICOM entity, or have enabled Automatic Login, this feature does not apply. You must be using InteleViewer connected to an IntelePACS.

---

## **Exporting Reports to PDF File Changes**

IntelViewer includes the following changes to exporting reports to PDF files:

- The format of reports is now based on the default report distribution templates provided by the IntelPACS Browser Report Distribution module.
- The Export PDF Reports dialog no longer contains the Include All Reports option.

## **DICOM Lossless JPEG Support**

IntelViewer supports the DICOM lossless JPEG transfer syntax. For detailed information, refer to the *IntelPACS DICOM Conformance Statement* and the *IntelViewer Workstation DICOM Conformance Statement*.

## **Sending Log Files to the Server**

When contacting Intelrad Technical Support to diagnose a problem with IntelViewer, you might be asked to send log files. You can send these files by choosing Help | Send Log Files To Server. After these files are transferred to your IntelPACS server, the support staff can examine them to resolve your issue.

**Note:** This command does not automatically contact Intelrad Technical Support. Use this command only when Intelrad Technical Support requests it.

## **Support for Dolby Fusion**

You can now use Dolby Fusion dictation systems with the Reporting Worklist Module.

**Note:** This is an optional feature which may not be available on your system. For information, contact your IntelPACS administrator.

## **Viewing RIS Information**

A new programming interface allows IntelViewer to open a web browser window that displays order information from a Radiology Information System (RIS). For more information on this interface, contact the Intelrad Support Center.

## **Simpler Network Requirements**

IntelViewer can receive image data from the IntelPACS using port 443 as well as port 5022. IntelViewer users can retrieve images from an IntelPACS with less risk of interference from network security systems. This new capability reduces the need for network administrators to reconfigure firewalls.

## **Reporting Worklist**

### **Searching for and Reserving Unassigned Orders**

You can filter entries in the worklist for unassigned orders. You can also reserve an unassigned order for yourself or others.



## **Transcription Module**

### **Foot Pedal Detection**

The Transcription module makes sure that a foot pedal is connected to your workstation when you open a dictation. If no foot pedal is plugged in, you can choose to properly connect a foot pedal, start playback without a foot pedal, or cancel.

### **Preventing Accidental Transcription Marking**

If the transcriptionist has listened to less than 70% of a dictation, then the Transcription module will display a dialog asking the transcriptionist to confirm that the dictation should be marked as transcribed.

## **IntelePACS**

There are no new features since version 3.6.1 of IntelePACS.

---

## **New Features in Version 3.6.1**

This section describes features and improvements added since the release of version 3.5.1 of IntelPACS Browser, IntelViewer, Reporting Worklist, Transcription module and IntelPACS.

### **IntelPACS Browser**

#### **Emergency Impressions Improvements**

The accession number, order status, phone numbers, and username are removed from the list and replaced with the patient date of birth and study description and modality. The phone numbers now appear when you place the mouse cursor over the name of the physician that created the impression.

The accession number and patient ID search filters are removed and replaced with patient name.

Impressions with alerts indicating, for example, a disagreement with an initial impression or an urgent case, are highlighted with an Alert indicator in the list.

An order can now display several impressions.

The Emergency Impressions Worklist has been renamed to Emergency Impressions.

The View Emergency Impression page has been renamed to View Impression.

#### **Distribution of Reports from a RIS**

Reports that are sent to the IntelPACS from a RIS will be distributed automatically, according to the rules defined in the Results Reporting module.

#### **Advanced Text Editor**

IntelPACS Browser now features an advanced text editor you can use to enter transcriptions, edit reports, create new report templates, and edit existing report templates. With the advanced text editor you can change font formats and sizes, add bulleted and numbered lists, copy and paste text, and include time stamps.

#### **Signing Worklist Report Indicator**

The Sign Reports page now features two links you can use to choose how to display a worklist that contains more than 50 reports. You can click one link to display all reports in the worklist or click the other to quickly display only the first 50.

#### **Report Distribution from HL7 Gateway Server**

Previously, IntelPACS could only distribute reports that were entered using tools and applications such as AOG, RWL and the Results Reporting module.

For example, DICOM files sent from external sources to IntelPACS, would go through the process of order generation, dictation, transcription, and report creation before being sent by the Results Reporting module to external sources.



Now IntelPACS can receive reports directly from external HL7 sources and redistribute them to other destinations. For example, third-party applications such as PowerScribe or Winscribe can electronically send reports (using HL7) to the Results Reporting module which can then redistribute them to other HL7 destinations.

### **Audit Statistics Enhancement**

The Audit Details page includes a new Add Emergency Impression checkbox that allows you to view the audit activities of users adding impressions.

### **Controlling Access to Orders by Organization**

In the Order Entry module, Order Completion Tool (OCT), and Manual Study Validation pages, you can now restrict access of users to orders that are available in specific organizations at their IntelPACS site.

**Note:** This is an optional feature which may not be available on your IntelPACS system and your user account also must be configured with the Grant Access to Only the Following Organizations restriction. For more information, contact your PACS administrator.

## **IntelViewer**

### **Display of Image Overlays**

IntelViewer supports the display of DICOM Group 6000 overlays. You can toggle the display of these overlays, as well as embedded (non-DICOM 6000) overlays on or off.

**Note:** Image overlays are stored in DICOM SOP instances as defined in the DICOM Base Standard 2007, part 3, Annex C.9.

### **Support for Grouped Procedures in Advanced Layout Management**

If you are running IntelViewer and your site is configured to use grouped procedures, layout protocols can now be applied when there are multiple studies in a single order. You can also easily navigate through the studies to view them.

### **Emergency Room Alerts**

IntelViewer provides emergency room alerts which streamline communication between the ER physician and the radiologist. When creating an impression in the Report Viewer, the radiologist can alert the ER physician to indicate that, for example, he or she disagrees with an initial impression. Impressions with alerts are highlighted for the ER physician in the Emergency Impressions list in IntelPACS Browser.

**Note:** When using this tool, it is important to remember to rely only on direct communication from the radiologist (in the form of a dictated report, impression, telephone call, or other method) when determining a course of treatment. The software does not provide any confirmation that the emergency impression has been sent to or received by the radiologist, or that ER alert has been delivered to the treating physician.

---

## **Order Status Appears in Exported Reports**

If you are running IntelViewer and exporting a report to PDF, the order status is added to the PDF header information.

**Note:** If the default value of the order status setting was modified in the configuration file in version 3.5.2 and you upgrade to version 3.6.1 of IntelViewer, you will not see the order status included in the PDF header information. To include the order status in the PDF header information, contact the Intelrad Support Center to change the configuration file.

## **peerVue qiVue Changes**

IntelViewer includes the following changes to the peerVue qiVue™ software:

- The Utilities menu item Launch peerVue has been changed to Launch qiVue.
- The User Preferences dialog application preference peerVue has been changed to qiVue.

## **Reporting Worklist**

### **Date Query Range**

You can filter entries in the worklist by date with more flexibility. The time filter in the Additional Filters section has improved controls for specifying ranges of dates.

### **Searching for Unassigned Orders**

You can filter entries in the worklist for unassigned orders.

### **Reserving Unassigned Orders**

When you reserve an unassigned order for yourself or others, the selected order is both reserved and assigned.

## **Transcription Module**

There are no new features since version 3.6.1 of IntelPACS.

## **IntelPACS**

### **Architecture and Performance Improvements**

Significant improvements have been made to the IntelPACS server infrastructure to support the evolution of our products, with specific initiatives to improve performance, auditing, redundancy, and software deployment.

### **Notification of User Account Expiration**

The one week threshold for user account expiry notifications is now configurable and this configuration is available for both IntelPACS Browser and IntelViewer.



### **Load Balancing Algorithm for Efficient Image Retrieval**

A new load balancing algorithm is available to prevent the same server from being chosen as the source destination for image series moves.

---

## Changes to Documentation

This section describes corrections and additions to documentation.

### **New Features for IntelViewer**

The *IntelViewer User Guide*, chapter 1 “Getting Started”, section “New Features in Version 3.8.1” contains inaccurate information. For revised information on new features for IntelViewer, see “IntelViewer” on page 18 of this release notes document.

## Known Issues

This section describes the known issues with IntelPACS 3.8.1 software, as well as possible workarounds for those issues. Please read this before reporting any new problems.

### IntelPACS Browser

#### **Cannot Transcribe an Addendum**

When attempting to transcribe an addendum, IntelPACS Browser displays an error: “An application error has occurred. Please return to your homepage. If the problem persists, please contact your PACS admin.”

IntelPACS Browser reports this error because it cannot find a transcription for the report with which the addendum is associated. First, use the IntelPACS Browser Transcribe Report page or Transcription module to transcribe the original report. Then transcribe the report’s addendum.

#### **Moving Images to Other Workstations**

You cannot move a study containing one series with one image to a DICOM destination.

### IntelViewer

#### **Slow Performance After Opening a Large Study**

Performance is slow when opening a new study after viewing a large study. This reduced performance occurs when the Long-Term Disk Caching preference is disabled on a workstation with limited RAM.

#### **Create New Account Opens Wrong IntelPACS Browser Page**

Clicking Create New Account in the IntelViewer login window opens the IntelPACS Browser login window. It should instead open the IntelPACS Browser page that displays the Confidentiality Agreement.

To display the Confidentiality Agreement from the IntelViewer login window, a new user must first click Create New Account in IntelViewer then click Create New Account in IntelPACS Browser. A simpler alternative is to ask the new user to open IntelPACS Browser directly then click Create New Account.

#### **Pro Medicus Preferences Unavailable in the Template Editor**

Although IntelViewer shows settings in its User Preferences dialog for configuring its interaction with the Pro Medicus system, these settings are currently not available in the IntelViewer Template Editor for user profiles.

#### **User Preferences Dialog is Empty**

In rare cases, opening the User Preferences dialog shows an empty, black window.

---

To view the settings in the User Preferences window, drag a window from another application over the User Preferences window then make the IntelViewer application active. The settings will be properly rendered in the User Preferences window.

### **Cannot Create a Teaching Case from a Locally-Stored Study**

When attempting to create a teaching case from a locally-stored study, the application reports in its status bar that it has sent images to IntelPACS. Searching for this teaching case in IntelViewer indicates that it was never created.

IntelViewer does not report accurate information in this case: it cannot create teaching cases from locally-stored studies. You must first connect to a PACS that contains the studies from which you want to create a teaching case.

### **Teaching Case Window has no Scrollbar**

When opening a teaching case, the Teaching Case Viewer has no scrollbar and may be hiding some of the information in the Case Details section.

Continue resizing the Teaching Case Viewer to enlarge it until all items in the Case Details section are revealed completely.

### **Key Images do not Always Appear in Viewports**

Key images appear the thumbnail bar but do not appear in the viewports when the Initial Image Display Location preference is set to End of Series in the Modality Default Settings preferences.

To correct this situation, press the down-arrow key on the keyboard. Alternately, change the Initial Image Display Location preference to Beginning of Series.

### **Presentation States cannot be Cleared**

The Clear Presentation State command in the Presentation States menu is sometimes not available after applying a presentation state to a series.

To correct this situation, reload the study that contains the series. Alternately, manually clear the manipulations from the presentation state by clicking Reset, Clear Measurement Tools, or Clear Annotation Tools in the toolbar.

### **Cannot View VOI Measurements in Screen Image Captures**

When using the Image Fusion module and choosing Tools | DICOM Capture to capture an image of the entire screen, the Tools menu appears in the captured image and hides the VOI measurements in the Measurements window. Use the keyboard shortcut **SHIFT+S** to capture the entire screen.

## **Reporting Worklist**

### **Reporting Worklist does not Start**

After upgrading Reporting Worklist, attempting to start it results in an error message: “IntelPass.dll not found”. This problem occurs when you upgrade Reporting Worklist then uninstall Intelrad eFilm™ Interface software.

To solve this problem, reinstall Reporting Worklist. When upgrading other workstations, uninstall Intelrad eFilm™ Interface before upgrading Reporting Worklist.

### **Exams do not Open with Barcode Scanner**

Scanning a barcode in Reporting Worklist sometimes does not open the required exam. Reporting Worklist does not always react as expected when using a barcode scanner when the Accession column is hidden.

To fix this problem, either make sure that the Accession column is visible in the Reporting Worklist window before you scan a barcode or press **ENTER** after using the barcode scanner to complete the action for opening an exam.

### **Ignored Amended Reports from PowerScribe**

Nuance PowerScribe™ Workstation has a report amendment feature. However, both IntelPACS Browser and IntelViewer will only display the most recent amendment that was dictated in PowerScribe without displaying the original report.

To avoid this situation when making an amendment in PowerScribe, make sure to copy and paste the original contents of a report into the amendment.